

PROCESS

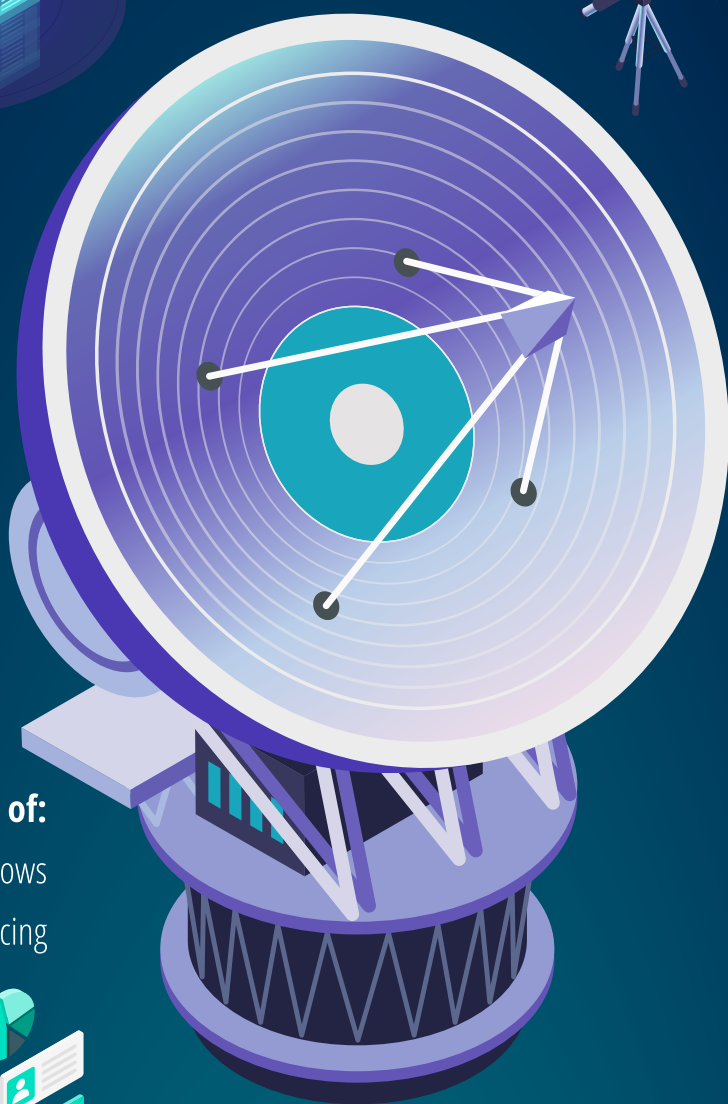
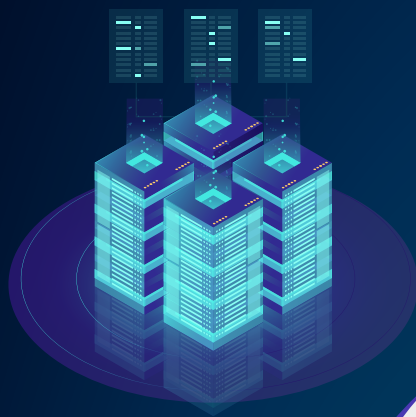
LOFAR / SKA

PROCESSING OF LARGE AMOUNTS OF DATA FROM TELESCOPE OBSERVATIONS

Simplification of data processing of LOFAR (Low Frequency Array) radio telescope observations, for easier access to science quality data by astronomers.

In this use case based on SKA (Square Kilometer Array), PROCESS is applied to data generated by the LOFAR radio telescope network in order to automate of the processing of all the available information.

Therefore, it seeks to relieve experts from current loads of work when retrieving and using observations by the LOFAR telescope network



Combination of:
Containerized workflows
Web interfacing



Workflow:
Data staged in from the LTA to the processing infrastructure
Processing Workflow launched
Results staged out in a Portal

Results:

- ✓ Greater ease of use
- ✓ Users can focus on really valuable analysis activities
- ✓ Make the data accessible to a larger audience



 **Lufthansa Systems**


AGH

 **ÚSTAV INFORMATIKY**
SLOVENSKÁ AKADEMIA VIED

 **eScience center**

 **LMU**
LUDWIG-MAXIMILIANS-UNIVERSITÄT MÜNCHEN

 **MNM**
TEAM
MUNICH NETWORK MANAGEMENT TEAM

Hes·SO


UNIVERSITEIT VAN AMSTERDAM

 **inmark europa**



This project has received funding from the European Union's Horizon 2020 research and innovation programme under grant agreement n° 777533